

# SuperDARN Data Distribution Working Group Report

SuperDARN Workshop  
Leicester, UK  
June 2015

Kevin Krieger  
University of Saskatchewan

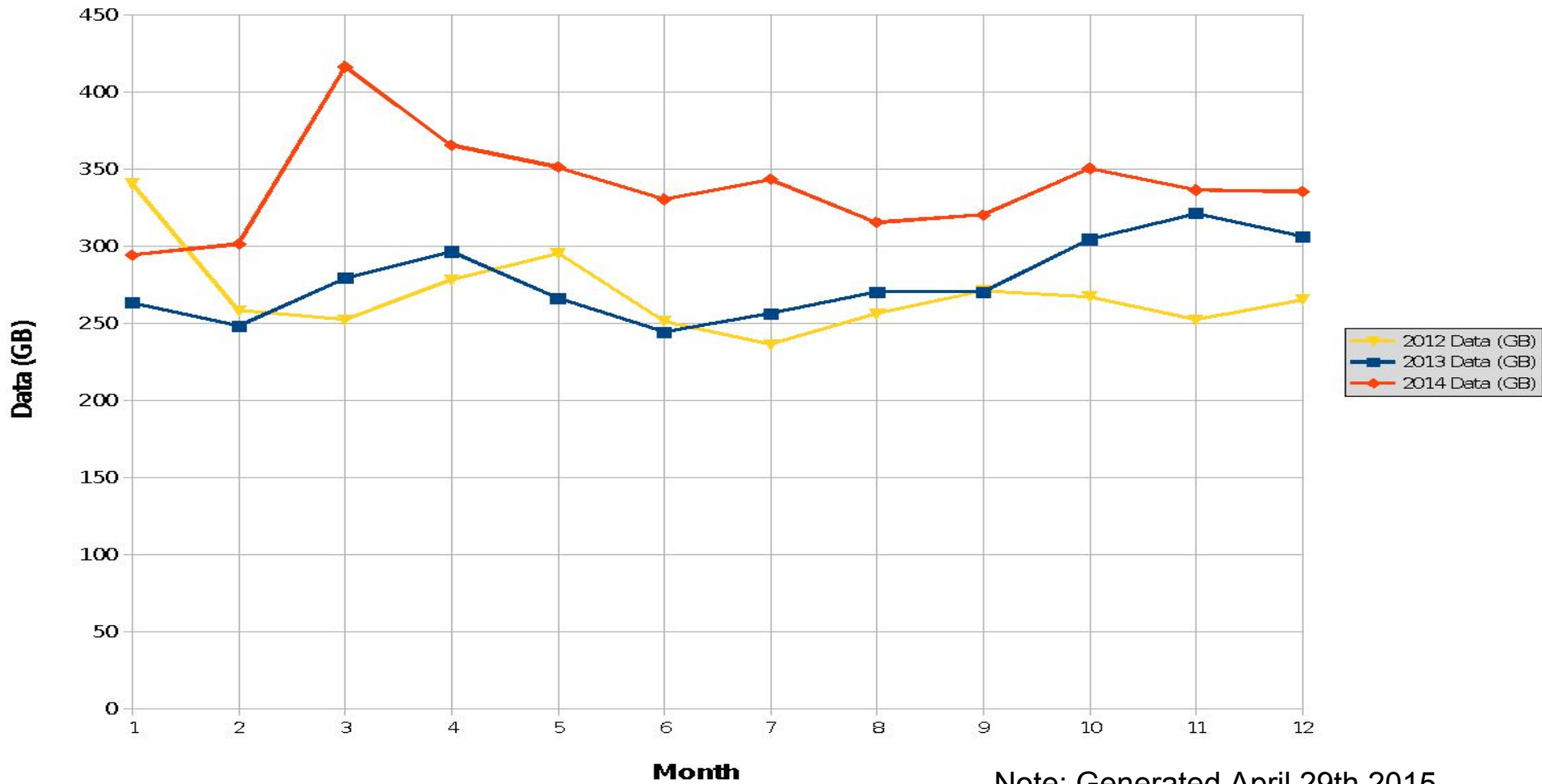
# Hard drives

- Hard drives written and distributed on a request basis
  - Only PRIC requested hard drives in 2014
  - 1 drive shipped for January - April 2014
  - 1 drive shipped for May - August 2014
  - 1 drive shipped for September - December 2014

# Gaps

- Emails with lists of data gaps sent out to data managers individually
- Data managers respond with which gaps are real, which are not – they post data they have for Kevin Sterne to route through U of Saskatchewan and be placed on the SuperDARN data mirror
- Still awaiting gap confirmations from dce, sye and sys

# Month rawacf.bz2 data on UofS Mirror - 2012/2013/2014



Note: Generated April 29th 2015

# BAS Data Mirror

Sync tests done with University of Saskatchewan and British Antarctic Survey mirrors in late April and May.

Working towards multiple mirror nodes, each responsible for subset of radars, then nodes all sync together

# UofS Data Mirror

- 16 users – contact Kevin K. (U of S) for a login
- rsync, scp, sftp available
- Data from 1993 – present available
- Down-times over past year:
  - 2014-04-17 20:50 - 22:50 UTC - power outage
  - 2014-05-13 23:00 - 23:42 UTC - computer move
  - 2014-09-03 15:00 - 18:58 UTC - Silo maintenance
  - 2014-10-10 15:00 - 20:55 UTC - computer move
  - 2014-11-25 - 2014-12-11 - Silo hardware failure
  - 2015-02-25 15:00 - 19:10 UTC - Silo software patching

# Issues

- Several issues worked through over the email list
  - Issue #2: Differences in rawacf files (reopened)
  - Issue #3: Corrected Canadian Data (reclosed)
  - Issue #4: Break-in Period Christmas Valley Radars (closed)
  - Issue #5: High Velocity ksr data - 201110 (closed)
  - Issue #6: Duplicate dat files (closed)
  - Issue #7: Duplicate named unw files (closed)
  - Issue #8: 6087 missing files added to mirror
- Radars for which we do not have regular data: sye, sys

# Future

- Removal of bad xcf data
- BKS data range offset modification

See

[http://vt.superdarn.org/tiki-index.php?  
page=Data+Dist+Working+Group](http://vt.superdarn.org/tiki-index.php?page=Data+Dist+Working+Group)

For updates on the ddwg.